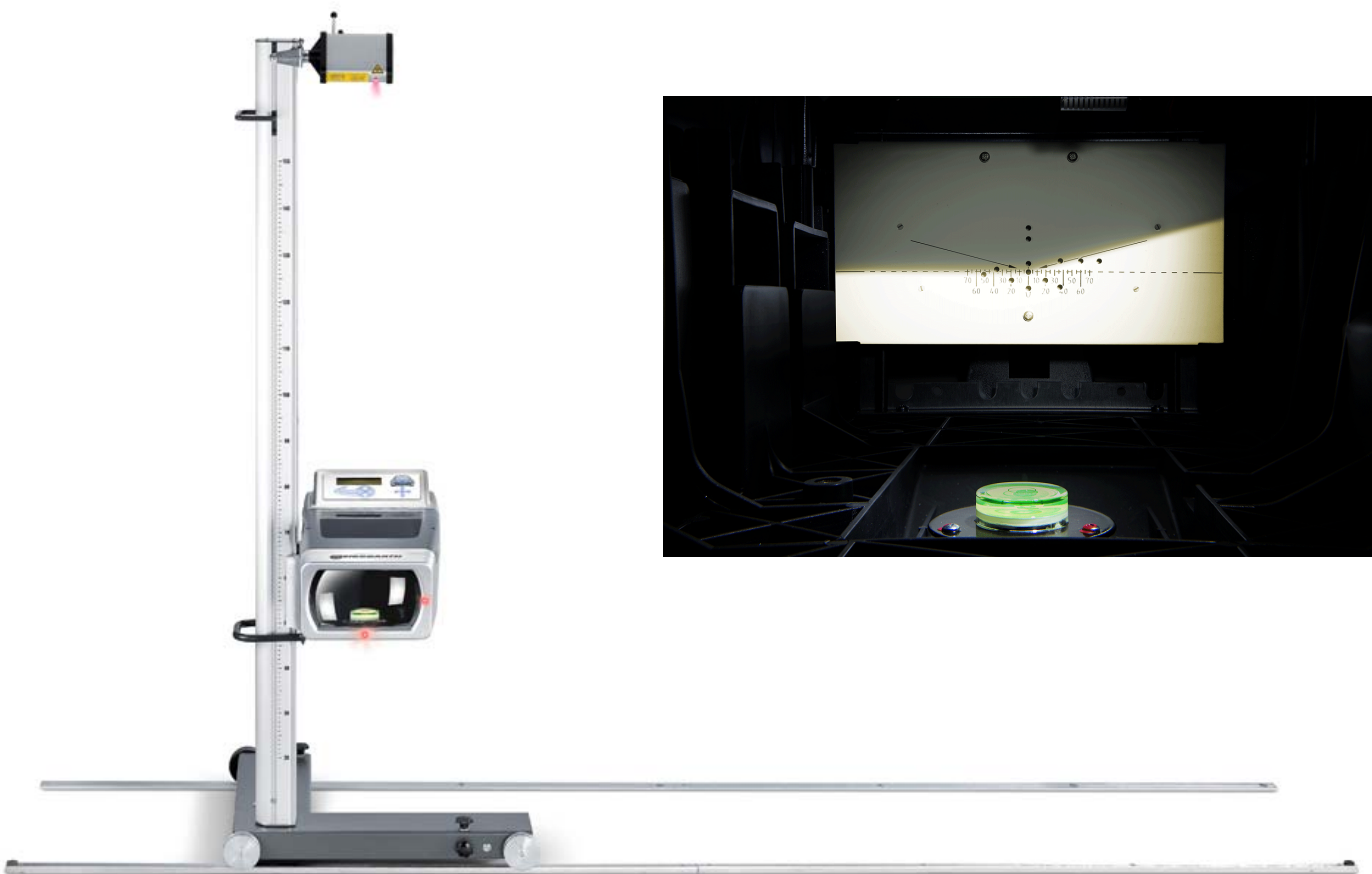


# Messbar besser

## MLD 615

Electronic headlamp testing:  
User-guided, fast and reliable



The Beissbarth MLD 615 is a photodiode headlamp adjustment device for reliable monitoring and evaluation of all common headlight systems. The test procedure is user-guided with visual and acoustic signals. Special functions support the adjustment. The design is ruggedly constructed for use in the workshop and enables ergonomic operation. The adjustment is reliable with laser technology and fast microcontroller.

## Product features

1. Setting of all types of light sources: filament, halogen, xenon and LED.
2. Adjustment of all types of vehicles: cars, motorcycles, trucks , commercial vehicles
3. Setting all types of lights: headlight, fog lights, additional lights
4. Electronic analysis with precise light-sensitive photodiodes
5. High quality glass lens: scratch-resistant and easy to clean
6. High mechanical stability of all system elements provide consistent precise values
7. 3-Wheel-Base
  - Levelable in longitudinal and transversal direction
  - Big rubber rollers for faithful transversal movement
8. Device column: low friction rotation on bush bearings
9. One-Hand-Operation
10. Maintenance free and quadruple mounted guiding system. Steel cable and rollers are covered and handle protected for the operator.
11. Battery operation
12. Rail system available as an optional accessory

**TÜV certified by examination in accordance with Directive for testing headlamp adjustment test equipment (Germany, StVZO §50 paragraph 5).**

## Precision through Optics & Laser

The accuracy of 615 MLD at the headlight adjustment is achieved by the quality system elements:

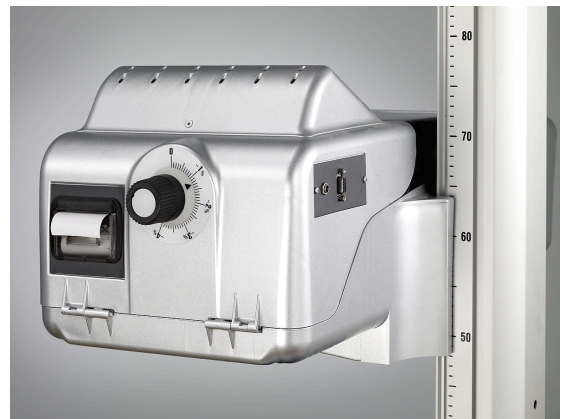
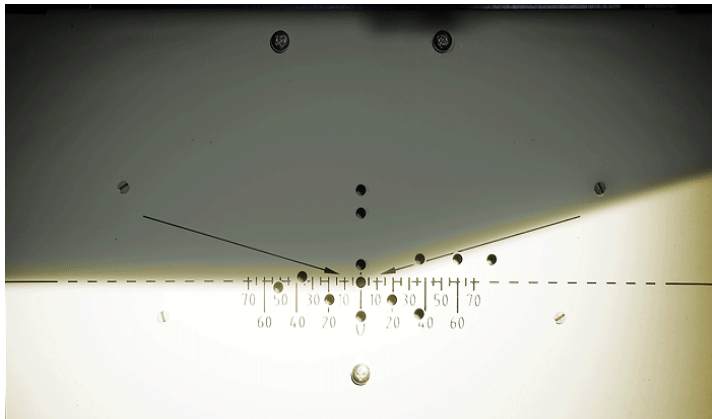
- Photo diodes: light-sensitive diodes allow a clear and precise analysis through optimized software
- Glass lens with 230 mm diameter
- Laser-visor for accurate alignment of the light box to the vehicle helps in the absence of distinctive chassis points, and explicit even in poor light conditions
- Cross laser for the alignment of the light box to the headlight projection unit or the lamp (especially helpful for LED and xenon)
- Sensor for automatic height measurement is available as an optional accessory

## Measured values

The MLD 615 evaluates the cut-off line with photodiodes in real time. The tolerances and results are presented visually by a lit LED cross symbol and acoustically as well.

Accuracy: 10 meters measuring distance + / - 1cm

- Inclination (vertical deviation from the break point)
- Horizontal deviation from the inflection point
- Intensity and illumination



## Display

- Two-line LCD display (backlit , alphanumeric)
- Display of the test result through the bright LED cross symbol
- Dust and splash proof
- Easy to clean
- Easy understandable and clearly visible symbols
- The display unit can be mounted in opposite way as well
- The display complies with formal standards for workshop use
- User interface in 10 languages

## Operation

User guidance for the evaluation and adjustment process:

- Self-explanatory operating steps
- The measurement results appear together with evaluation
- An acoustic signal is given when correct position is reached (i.e. to avoid constant eye contact with the device)

Ergonomically designed controls for quick and easy light adjustment:

- Extra light adjustment: the noiseless counterweight system and special plastic sliding module make it finger-light to operate the device with one hand.
- Automatic self-locking over the range of 24-145 cm
- 360° Operation: round operation

Technical data		
<b>Measuring range</b>		
Orientation	Top and bottom	+2% - -4% (+200 – -400 mm)
	Right and left	
	Low beam	+3% - -3% (+300 – -300 mm)
	High beam	+0,5% - -3% (+50 – -300 mm)
Intensity	Candela	0 - 150000
Illumination	Lux / 1m	0 - 150000
	Lux / 25m	0 - 240
<b>Units</b>		
Intensity	Candela	
Illumination	Lux (25m) – kLux (1m)	
Adjustment	% - cm - °	
<b>Operating conditions</b>		
Adjustment lens centre (mm)	240 - 1450	
Plug voltage	100-240 V / 50-60 Hz	
Battery voltage	12 V	
Operating temperature (°C)	5 - 45	
<b>Packaging</b>		
Width – Height – Length (mm)	1790 – 700 – 650	
Weight (kg)	28,5	
<b>Certificate</b>	CE , TÜV	
<b>Measuring value</b>		
Horizontal deviation	Evaluation	
Vertical deviation (Pitch angle)	Evaluation	
Intensity	Digital value and evaluation	
Roll angle	Visual	
Yaw angle	Visual	

Part numbers	
<b>Electronic headlight tester</b>	
<b>1 692 104 322</b>	<b>MLD 615 with built in printer</b>
<b>Accessories:</b>	
<b>1 692 105 080</b>	<b>3m Rail System for above- /n ground installation</b>
<b>1 692 105 066</b>	<b>Sensor for automatic height measurement (Q2 2015)</b> Installation at start-up



## Beissbarth Service worldwide

**Service from Beissbarth Munich:** Immediate telephone support, rapid replacement parts deliveries, individual maintenance contracts

**Factory customer service:** Beissbarth and certified partner companies

provide on-site assistance with installation, instruction, equipment assembly and maintenance – with partners in more than 90 countries around the world.

**Training Centre:** Instruction and training at STC of Robert Bosch GmbH, 73207 Plochingen

**Software Centre:** Technical documentation, specified vehicle data and marketing material for immediate download: [www.beissbarth.com](http://www.beissbarth.com)

Subject to technical modification and changes to scope of delivery. Pictures may sometimes show special accessories or similar versions. Please contact your Beissbarth dealer for a binding up-to-date quotation.

Beissbarth GmbH  
A Bosch Group Company  
Hanauer Strasse 101  
80993 Muenchen (Germany)

Tel. +49-89-149 01-384  
Fax +49-89-149 01-240

[www.beissbarth.com](http://www.beissbarth.com)  
[sales@beissbarth.com](mailto:sales@beissbarth.com)