

# SA 880 Excellence



*Available also with the configuration without hardware Model SA 800 Excellence w/o hardware 1690700029*

## 12 CAM 3D TECHNOLOGY

Its measurement precision fulfills the highest workshops requirements.

High measurements and repeated accuracy.

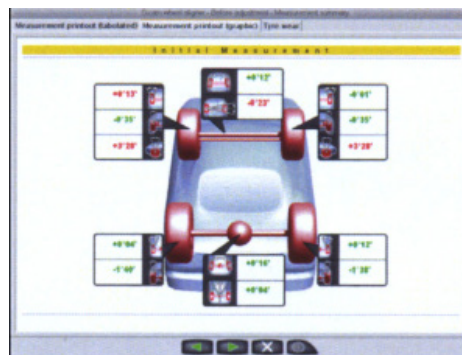
- Two camera reference system; avoid fixed assembling and calibration of the sensors
- Rolling run-out compensation (even with running motor) with sensors' initialization
- The special shape and position of the sensors allow use of small places with limited space in front of the post
- Measurement of the vehicle in 7 minutes
- Movable system; sensors and cabiner can be easily displaced
- 30° + 30° rolling out compensation

### SCOPE OF DELIVERY

- ▶ Measuring board
- ▶ Brake lock
- ▶ Steering wheel lock
- ▶ Cable kit 15m for Easy 3D
- ▶ IR Remote control (IAM version)
- ▶ Lift adapter
- ▶ 4x Multi-Fit clamps
- ▶ Special claws for multi-fit clamp
- ▶ Set of 4 magnetic wheel fastener for 3D boards
- ▶ Mechanical standard aluminum turntable without electronics



Graphic illustration guide the operator during the adjustment phase



Measurement printout

Technical specifications	SA 880 D <sup>3</sup> EXCELLANCE	SA 880 D <sup>3</sup> EXCELLANCE W/O HW
Part number	1690700059	1690700029
Com-box	Cable	Cable
Sensor heads	X	X
Targets	X	X
Trolley	X	X
High Performance PC	X	
Monitor 27"	X	
Printer	X	
Lift adapter	X	X
Cable set 15m	X	X
Multifit wheel clamp	X	X
Special claws	X	X
Magnetic wheel clamp	X	X
Mechanical turntables	X	X
Remote control	X	X
Steering wheel holder	X	X
Brake pedal depressor	X	X

# SA 880 D<sup>3</sup> Mobile



## SA 880 D<sup>3</sup> MOBILE

12 Cam 3D technology. Measuring heads, 4 target boards, multibox for wireless data transmission. The accuracy of the measurements satisfies the workshops highest requirements.

- Two camera reference system; avoid fixed assembling and calibration of the sensors
- Rolling run-out compensation (even with running motor) with sensors' initialization
- The special shape and position of the sensors allow use of small places with limited space in front of the post
- Measurement of the vehicle in 7 minutes
- Movable system; sensors and cabiner can be easily displaced
- 30° + 30° rolling out compensation



Graphic illustration guide the operator during the adjustment phase



Measurement printout

Technical specifications	SA 880 D <sup>3</sup> RADIO KIT
Part number	1690700058
Com-box	Wifi
Sensor heads	X
Targets	X
Trolley	
High Performance PC	
Monitor 27"	
Printer	
Lift adapter	
Cable set 15m	
Multifit wheel clamp	
Special claws	
Magnetic wheel clamp	
Mechanical turntables	
Remote control	
Steering wheel holder	
Brake pedal depressor	

### SCOPE OF DELIVERY

- ▶ Sensors heads
- ▶ Targets
- ▶ CPU
- ▶ Software and cara data bank
- ▶ User manual

# SA 680 R Excellence



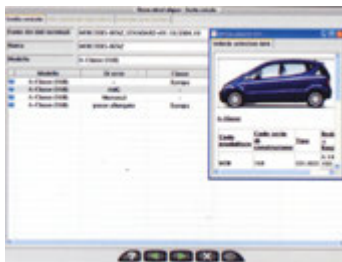
*Available also with the configuration without hardware Model SA 680 R Excellence w/o hardware 1690310053*

**SA 680R EXCELLENCE - 8CCD** wheel alignment system guarantees the highest precision, absolute accuracy and repeatability.

- ▶ Reading of angles greater than 20° which allows the measuring of the caster without electronic plates
- ▶ Run-out encoder that simplifies and speeds up run-out compensation operations
- ▶ Camber adjustment with vehicle in raised position
- ▶ Calculation of toe variation
- ▶ Different language selection
- ▶ Customer database index system with automatic search
- ▶ Car manufacturer target data updateable periodically

### SCOPE OF DELIVERY

- ▶ Brake lock
- ▶ Steering wheel lock
- ▶ Cable set for measurement heads
- ▶ Set of measurement heads 8-CCD radio 433 Mhz without encoder
- ▶ IR remote control (IAM version)
- ▶ 4 X Multi-Fit clamps
- ▶ Special claws for multi-fit clamp
- ▶ Mechanical standard aluminium turntable without electronics



Database complete and updatable periodically



Overview of vehicle data quick checking



Simple, intuitive icons allow direct selection of the required pages



Graphic illustration guide the operator during the adjustment phase



Additional measurements allow verifying the deck conditions

Technical specifications	SA 680 R EXCELLENCE	SA 680 R W/O HW
Part number	1690310042	1690310053
CCD Sensor heads	X	X
Frequency	443 Mhz	443 Mhz
Trolley	X	X
High Performance PC	X	
Monitor 27"	X	
Printer	X	
Mechanical turntables	X	X
Multifit-Clamps	X	X
Special claws	X	X
Remote control	X	X
Steering wheel holder	X	X
Bake pedal depressor	X	X
Emergency cable set	X	X

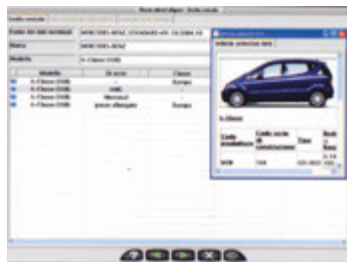


# SA 685 MOBILE



**SA 685 MOBILE -8 CCD** wheel alignment system guarantees the highest precision, absolute accuracy and repeatability without cabinet or PC.

- Reading of angles greater than 20° which allows the measuring of the caster without electronic plates
- Run-out encoder that simplifies and speeds up run-out compensation operations
- Camber adjustment with vehicle in raised position
- Calculation of toe variation
- Different language selection
- Customer database index system with automatic search
- Car manufacturer target data updateable periodically



*Database complete and updatable periodically*



*Overview of vehicle data quick checking*



*Simple, intuitive icons allow direct selection of the required pages*



*Graphic illustration guide the operator during the adjustment phase*



*Additional measurements allow verifying the deck conditions*

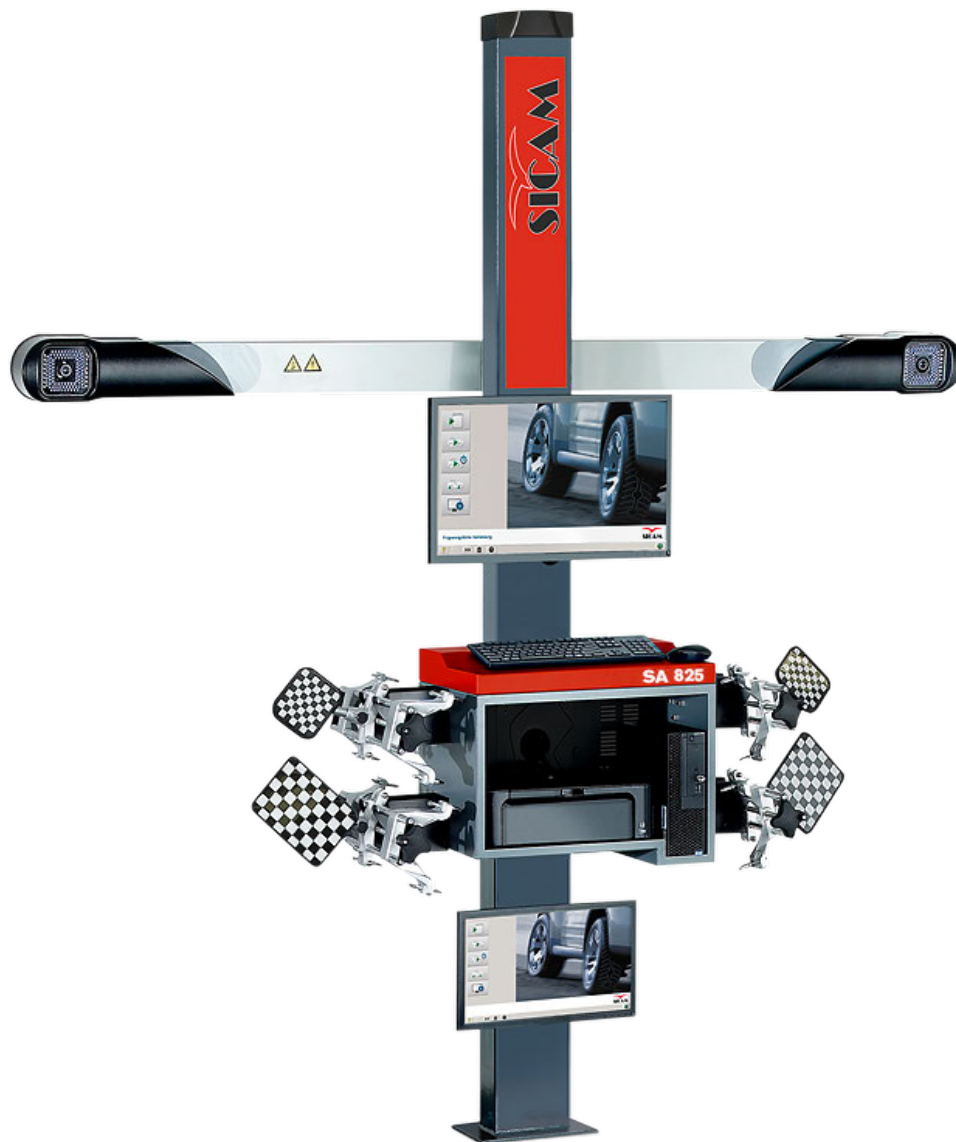
Technical specifications	SA 685 MOBILE
Part number	1690310058
CCD Sensor heads	X
Frequency	443 Mhz
Trolley	
High Performance PC	
Monitor 27"	
Printer	
Mechanical turntables	
Multifit-Clamps	
Special claws	
Remote control	
Steering wheel holder	
Bake pedal depressor	
Emergency cable set	X

### SCOPE OF DELIVERY

- ▶ Sensor heads charging pods
- ▶ Cable set for measurement heads
- ▶ Measurement system for bluetooth transmission
- ▶ Set of measurement heads 8-CCD radio 433 Mhz with encoder



# SA 825



## 3D TECHNOLOGY WITH 2 CAMERAS

### HEIGHT ADJUSTMENT OF THE CAMERA BEAM

Between 600 and 2400 mm for variable working heights (even on ground level)  
SA 825: manually adjustable

### MEASUREMENT INSTRUCTIONS

Via monitor or smart camera LEDs for:

- the alignment of the targets
- runout compensation
- steering lock

### SMALL TARGETS

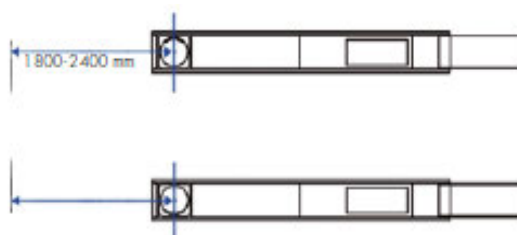
- space saving design
- No mechanical spirit level (virtual alignment)

### WHEEL ALIGNMENT SOFTWARE

- Dell PC running on Windows 10
- User-friendly, intuitive interface
- Program-controlled measurement routines: standard, quick & random
- Comprehensive Autodata vehicle database with editor
- Camber indication in lifted condition eases the adjustment

### ADDITIONAL MEASUREMENT PARAMETERS

- Rim diameter
- Side offset
- Axle spacing
- Longitudinal offset
- Difference: axle spacing
- Difference: track width



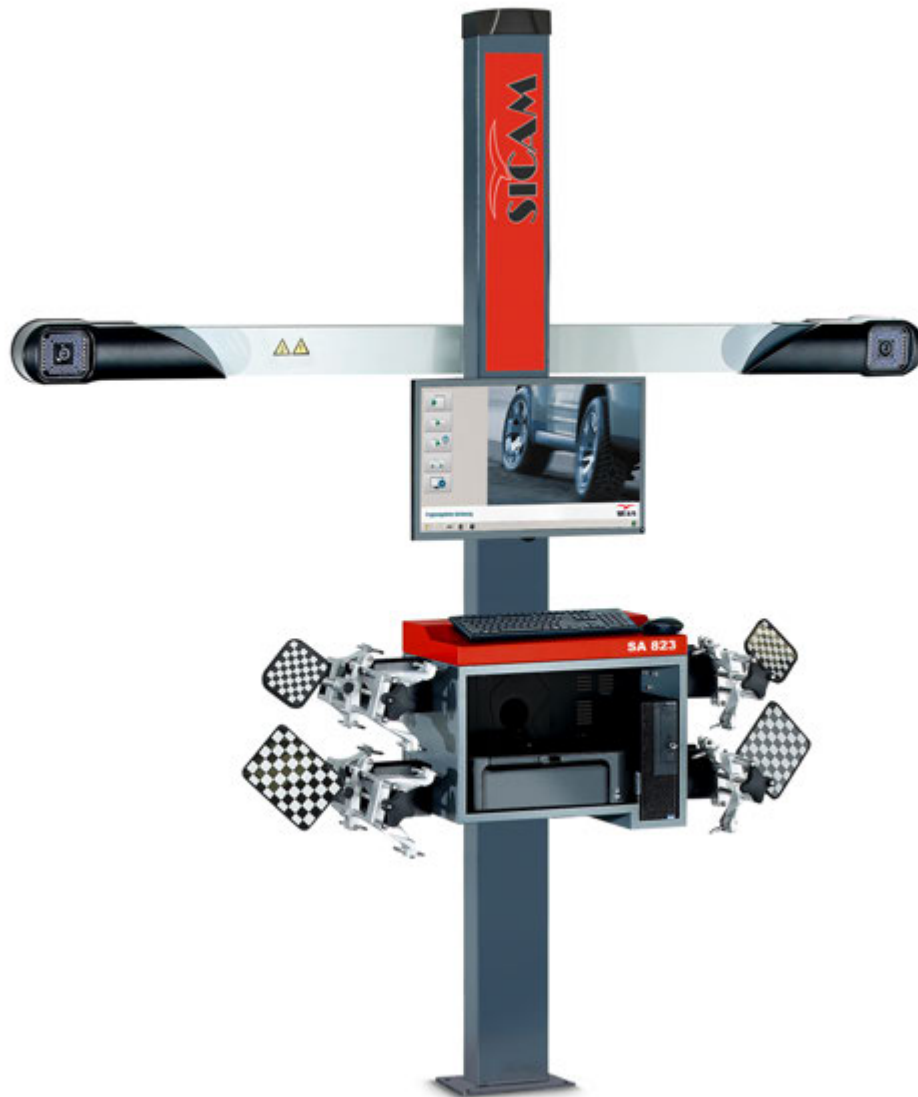
### SCOPE OF DELIVERY

- ▶ 24" Monitor (Upon request)
- ▶ 19" Monitor (only for ML 35)
- ▶ Target: Front left, front right
- ▶ Turnable 2 pieces already included (1 piece)
- ▶ Filling bars for turntable 1 692 000 155 (2 pieces)
- ▶ Universal clamp 13-25" 4 pieces (incl. Standard car clamps) already included (1 piece)
- ▶ Brake lock
- ▶ Steering lock
- ▶ Brake chocks (2 pieces)

### SPECIAL ACCESSORIES

- ▶ Printer (Upon request)
- ▶ Standard claw for Universal clamp for normal steel rims
- ▶ Standard claw 1 for Universal clamp for standard alloy and alloy softline rims
- ▶ Standard claw 2 for Universal clamp for standard alloy rims
- ▶ Standard claw 3 for Universal clamp for standard alloy rims
- ▶ Multi-fit clamp 13-22" 4 standard claws for Multi-Fit clamps
- ▶ Extension to 28" for Multi-Fit clamp
- ▶ Standard claw for Multi-Fit clamp for normal steel rims
- ▶ Standard claw For Multi-Fit clamp For standard alloy and alloy softline rims
- ▶ Truck claw for Multi-Fit clamp

# SA 823



## SA 823 - 3D TECHNOLOGY WITH 2 CAMERAS

### HEIGHT ADJUSTMENT OF THE CAMERA BEAM

Between 600 and 2400 mm for variable working heights (even on ground level)  
SA 825: manually adjustable

### MEASUREMENT INSTRUCTIONS

Via monitor or smart camera LEDs for:

- the alignment of the targets
- runout compensation
- steering lock

### SMALL TARGETS

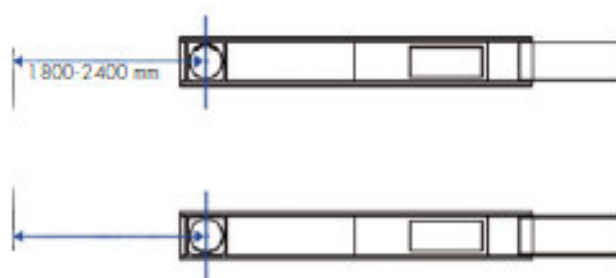
- space saving design
- No mechanical spirit level (virtual alignment)

### WHEEL ALIGNMENT SOFTWARE

- Dell PC running on Windows 10
- User-friendly, intuitive interface
- Program-controlled measurement routines: standard, quick & random
- Comprehensive Autodata vehicle database with editor
- Camber indication in lifted condition eases the adjustment

### ADDITIONAL MEASUREMENT PARAMETERS

- Rim diameter
- Side offset
- Axle spacing
- Longitudinal offset
- Difference: axle spacing
- Difference: track width



### SCOPE OF DELIVERY

- ▶ 24" Monitor (Upon request)
- ▶ 19" Monitor (only for ML 35)
- ▶ Target: Front left, front right
- ▶ Turntable 2 pieces already included (1 piece)
- ▶ Filling bars for turntable 1 692 000 155 (2 pieces)
- ▶ Universal clamp 13-25" 4 pieces (incl. Standard car clamps) already included (1 piece)
- ▶ Brake lock
- ▶ Steering lock
- ▶ Brake chocks (2 pieces)

### SPECIAL ACCESSORIES

- ▶ Printer (Upon request)
- ▶ Standard claw for Universal clamp for normal steel rims
- ▶ Standard claw 1 for Universal clamp for standard alloy and alloy softline rims
- ▶ Standard claw 2 for Universal clamp for standard alloy rims
- ▶ Standard claw 3 for Universal clamp for standard alloy rims
- ▶ Multi-fit clamp 13-22" 4 standard claws for Multi-Fit clamps
- ▶ Extension to 28" for Multi-Fit clamp
- ▶ Standard claw for Multi-Fit clamp for normal steel rims
- ▶ Standard claw For Multi-Fit clamp For standard alloy and alloy softline rims
- ▶ Truck claw for Multi-Fit clamp